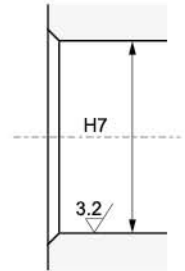
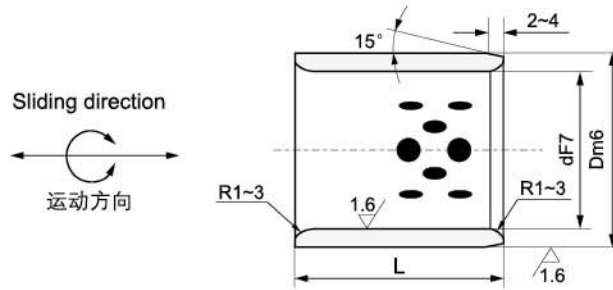


HKB-650 自润滑轴套

HKB-650 Metric Cylindrical Bushes



Mating Housing
相配座孔

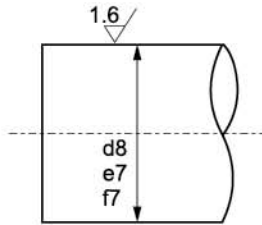
单位Unit: mm

内径		外径		长度 L ^{-0.1} / _{-0.3}							
Ø d		Ø D		8	10	12	15	16	19	20	25
6	+0.022 +0.010	10	+0.015 +0.006	061008	061010	061012					
8	+0.028 +0.013	12		081208	081210	081212	081215				
10		14	+0.018 +0.007	101408	101410	101412	101415			101420	
12		18		121808	121810	121812	121815	121816	121819	121820	121825
13		19			131910	131912	131915			131920	131925
14		20			142010	142012	142015			142020	142025
15	+0.034 +0.016	21			152110	152112	152115	152116		152120	152125
16		22			162210	162212	162215	162216	162219	162220	162225
17		23	+0.021 +0.008				172315				
18		24			182410	182412	182415	182416		182420	182425
19		26					192615			192620	
20		28			202810	202812	202815	202816	202819	202820	202825
		30			203010	203012	203015	203016		203020	203025
22		32				223212	223215			223220	223225
25	+0.041 +0.020	33				253312	253315	253316		253320	253325
		35				253512	253515	253516		253520	253525
28		38								283820	283825
30						303812	303815			303820	303825
		40	+0.025 +0.009			304012	304015			304020	304025
31.5											
32		42								324220	
35		44								354420	354425
		45								354520	354525
38	+0.050 +0.025	48									
40		50					405015			405020	405025
		55					405515				
45		56	+0.030 +0.011								
		60									

HKB-650 自润滑轴套
HKB-650 Metric Cylindrical Bushes



材质	高力黄铜 + 固体润滑剂
Material	650#+Graphite



d8: High load 高负荷
e7: Light load 轻负荷
f7: High precision 高精度

Mating Shaft
相配轴

单位 Unit: mm

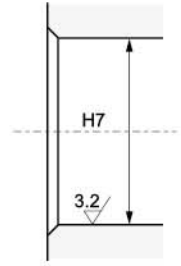
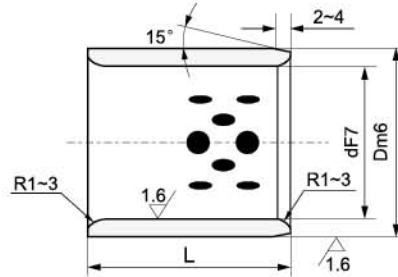
长度 L $^{+0.1}_{-0.3}$							压入后 内径公差	适用垫圈	内径
30	35	40	50	60	70	80		HKB-JTW	Ø d
							+0.019 +0.007	0603	6
							+0.025 +0.010	0803	8
								1003	10
121830							+0.031 +0.013	1203	12
131930								1303	13
142030								1403	14
152130	152135	152140					+0.030 +0.012	1503	15
162230	162235	162240						1603	16
								1803*	17
182430	182435	182440						1803	18
								2005*	19
202830	202835	202840	202850					2005	20
203030	203035	203040	203050					2505*	
									22
253330	253335	253340	253350	253360			+0.037 +0.016	2505	25
253530	253535	253540	253550	253560				3005*	28
283830		283840						3005	30
303830	303835	303840	303850	303860					31.5
304030	304035	304040	304050	304060				3505	
314030		314040							32
324230		324240							35
354430	354435	354440	354450	354460			+0.046 +0.021	3505	
354530	354535	354540	354550	354560				4007*	38
		384840							40
405030	405035	405040	405050	405060	405070	405080		4007	
405530	405535	405540	405550	405560				4507*	45
455530	455535	455540	455550	455560			+0.045 +0.020	4507	
455630	455635	455640	455650	455660					
456030	456035	456040	456050	456060	456070	456080			

HKB-650 自润滑轴套

HKB-650 Metric Cylindrical Bushes



Sliding direction
运动方向

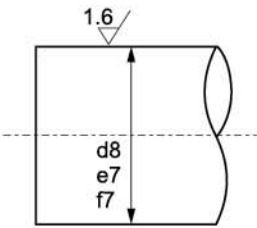


Mating Housing
相配座孔

单位Unit: mm

内径		外径		长度 L $^{+0.1}_{-0.3}$									
Ø d		Ø D		20	30	35	40	50	60	70	80		
50	+0.050 +0.025	60		506020	506030	506035	506040	506050	506060	506070	506080		
		62			506230	506235	506240	506250	506260	506270	506280		
		65			506530		506540	506550	506560	506570	506580		
55		70	+0.030 +0.011		557030	557035	557040	557050	557060	557070			
60	74			607430	607435	607440	607450	607460	607470	607480			
	75			607530	607535	607540	607550	607560	607570	607580			
63		75							637560	637570	637580		
65		80					658040	658050	658060	658070	658080		
70	+0.060 +0.030	85			708530	708535	708540	708550	708560	708570	708580		
		90						709050	709060	709070	709080		
75		95							759050	759060	759070	759080	
		96	+0.035 +0.013						759560	759570	759580		
80		100						809640	809650	809660	809670	809680	
85		100							8010040	8010050	8010060	8010070	8010080
		110								8510060		8510080	
90		110										9011080	
100	+0.071 +0.036	120							9011050	9011060		9011080	
		130							10012050	10012060	10012070	10012080	
110		130									11013080		
120		140									12014070	12014080	
125		145											
130		150	+0.040 +0.015									13015080	
140		160											
150	+0.083 +0.043	170										15017080	
160			180									16018080	
170		190											
180		200	+0.046 +0.017										
190	+0.096 +0.050	210											
200			230										

HKB-650 自润滑轴套 HKB-650 Metric Cylindrical Bushes



d8: High load 高负荷
e7: Light load 轻负荷
f7: High precision 高精度

Mating Shaft
相配轴

材质	高力黄铜 + 固体润滑剂
Material	650#+Graphite

单位Unit: mm

长度 L ^{+0.1} / _{-0.3}							I.D.After Press-Fitting 压装后内孔	HKB-JTW 适用垫片	内径
90	100	120	130	140	150	200			Ø d
							+0.045 +0.020	50	50
	5065100							55	55
							+0.055 +0.025	60	60
	6075100							65	65
								70	70
	7085100							75	75
	7590100						+0.054 +0.024	80	80
	7595100							85	85
	8096100	8096120						90	90
	80100100	80100120		80100140				100	100
9011090	90110100	90110120					+0.065 +0.030	110	110
10012090	100120100	100120120		100120140				120	120
	110130100	110130120					+0.064 +0.029	125	125
12014090	120140100	120140120		120140140				130	130
	125145100	125145120						140	140
	130150100		130150130					150	150
	140160100			140160140				160	160
	150170100				150170150		+0.076 +0.036	-	170
	160180100				160180150				180
	170190100				170190150				190
	180200100				180200150				200
	190210100				190210150		+0.088 +0.042		
					200230150	200230200			